



FreeFree

Remote Conviviality

Lucia Gutierrez

PERSONAL BRIEF

Brief

As a personal brief I decided to design an object that allows its user to increase their day to day socialising from the comfort of their own home.

While still creating an experience with food that can blend into the users life, enhancing the connection to food, enabling the user to feel more present during the interaction with this product.



Key Words

Rituals

Light

Fresh

Organic

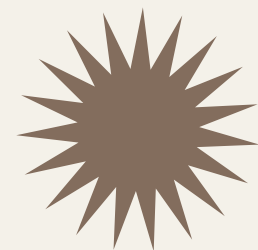
Down to earth

Connection





PROBLEMS & GAPS



Not enough sociability

It's become increasingly difficult to have social interactions in person, because people don't feel safe in crowded places, causing our overall happiness levels to diminish.

Lack of presence

50% of the people I interviewed are doing something else while eating, therefore they aren't as present and lack the connection either with family members or to the food itself.

Limited options for connecting virtually

My survey also showed me that people are barely going out to restaurants, which means they need options for socialising from afar.



CONCEPT DESCRIPTION



Morning Rituals

One of my main goals with this project is to enable the user to implement this product into their morning routines in a slow and calm way.

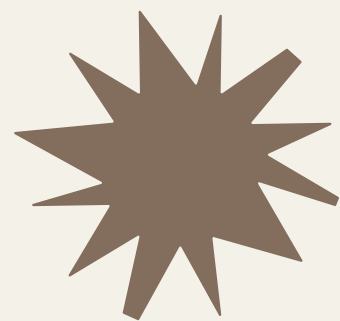
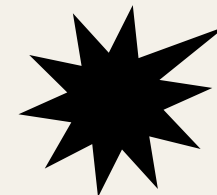
Mindfulness

I want the user to enjoy the process of a simple morning task while encouraging them to be more present in their daily life.

Connecting across the world

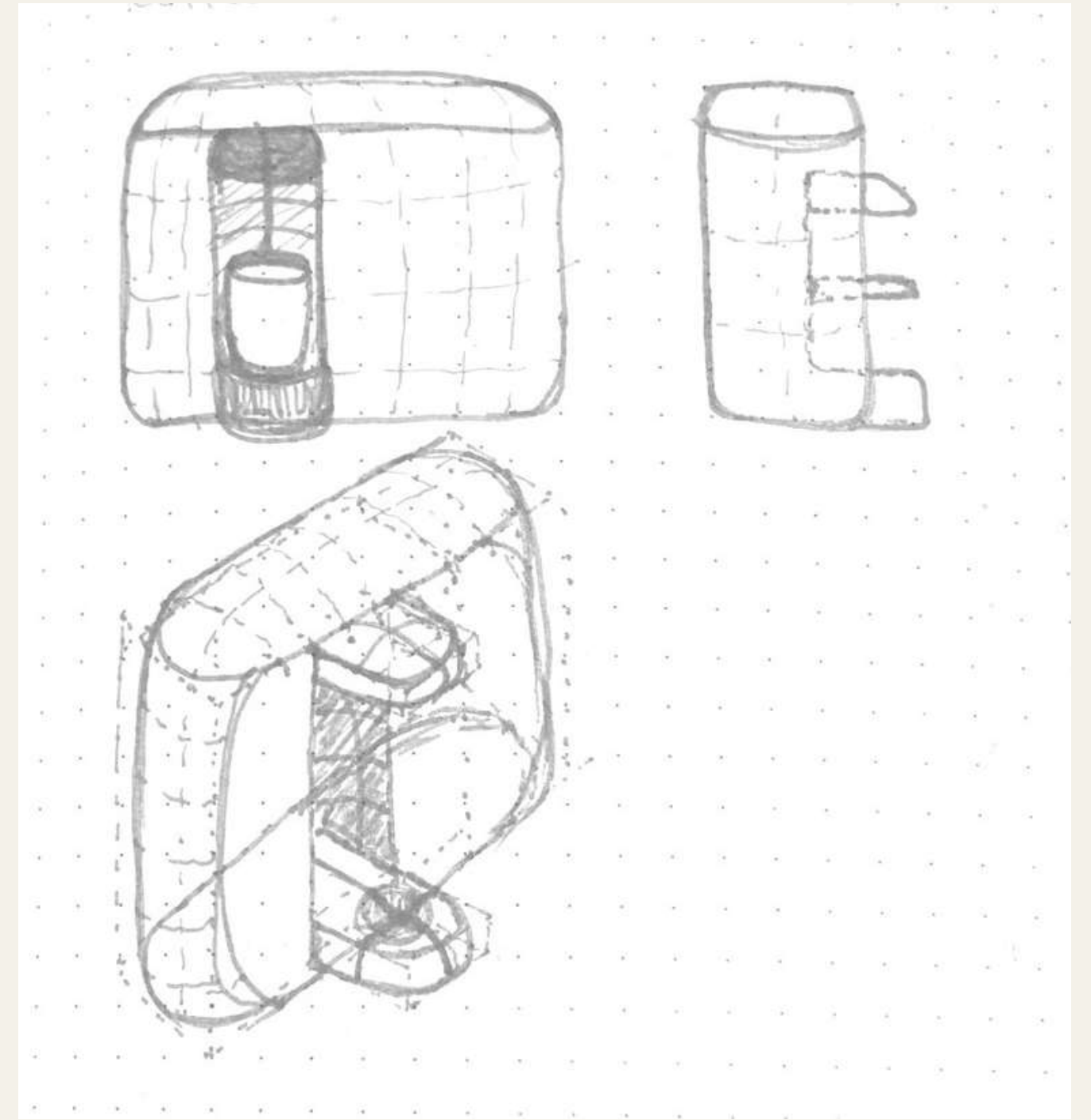
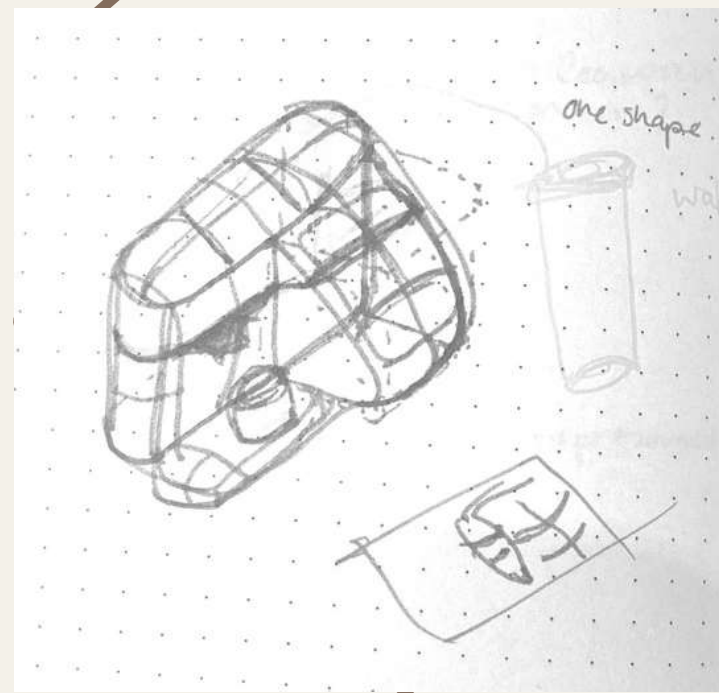
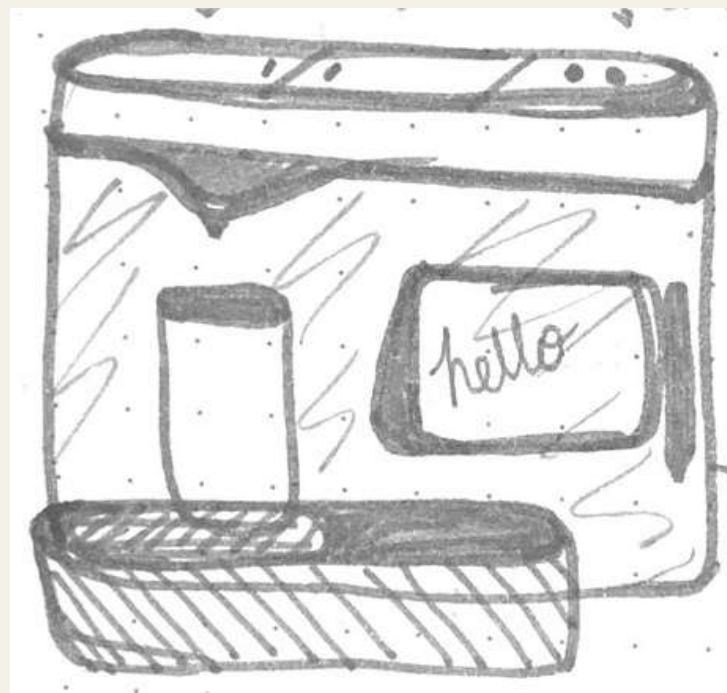
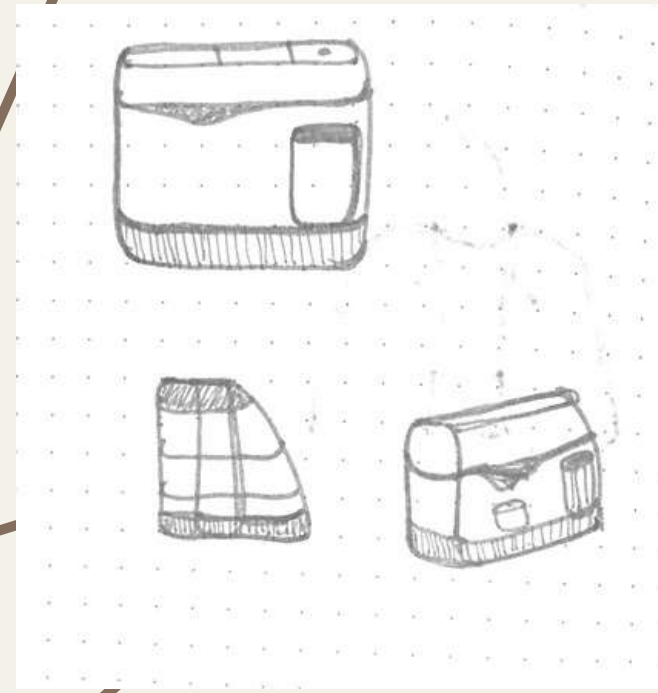
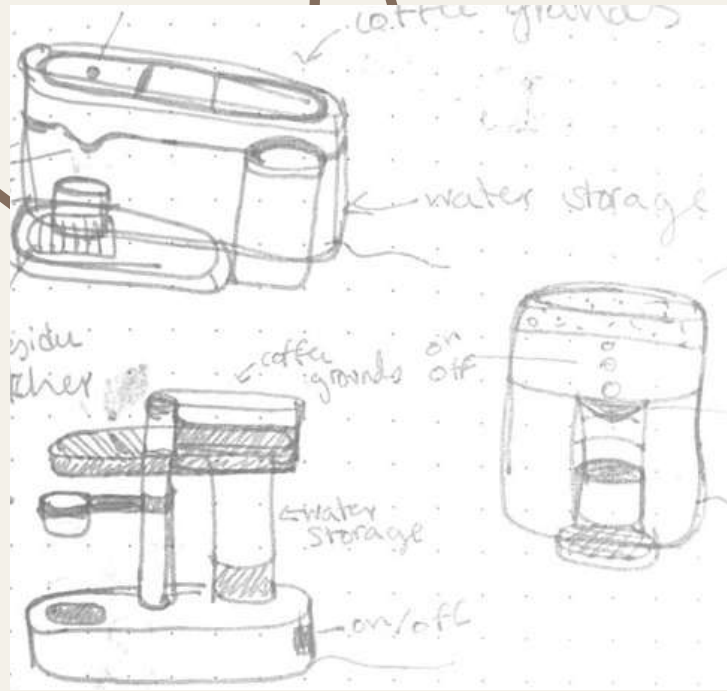
Socialising has become something we have to prioritise. This product will ease the to communicate with your loved ones without having to use your phone and breakaway your attention from the task at hand.

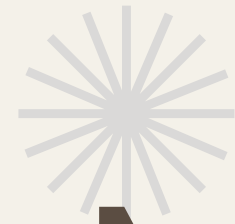
Preliminary
Sketches



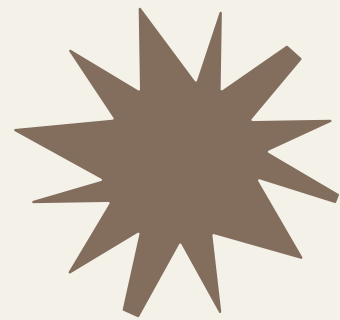
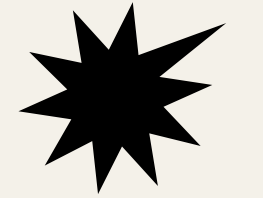
VISUAL REPRESENTATION

PRELIMINARY SKETCHES





Moodboards

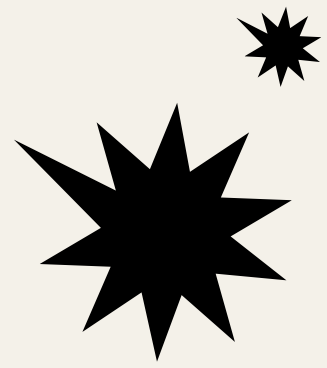


MOOD & STYLE

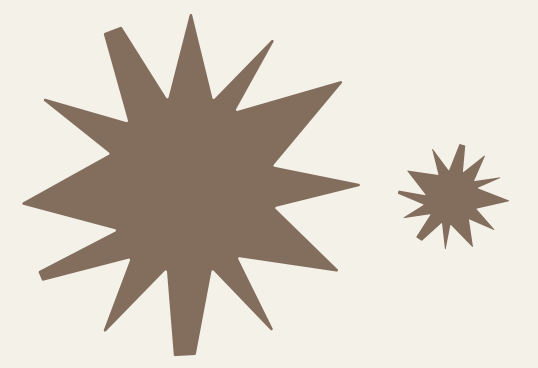


INSPIRATIONAL MOODBOARD



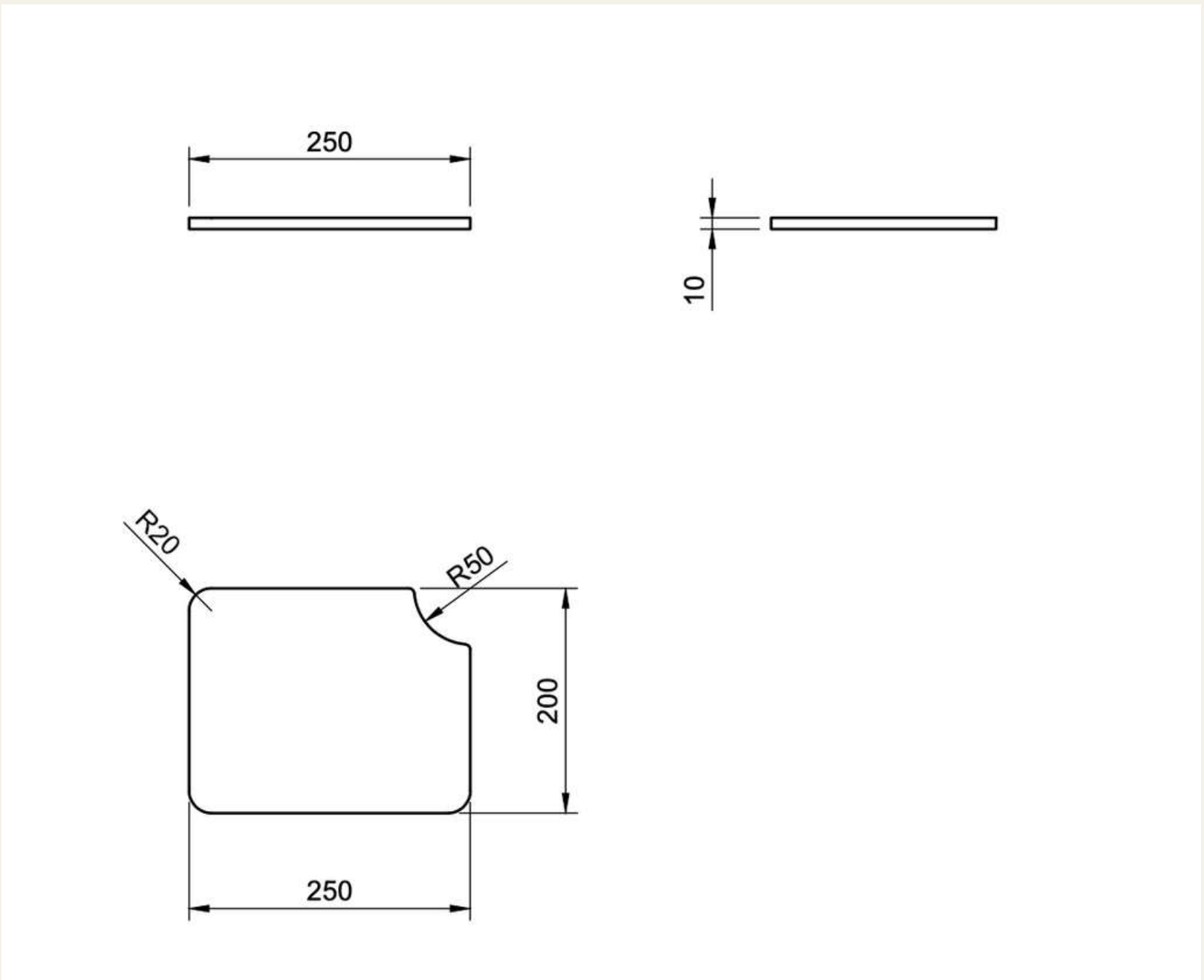
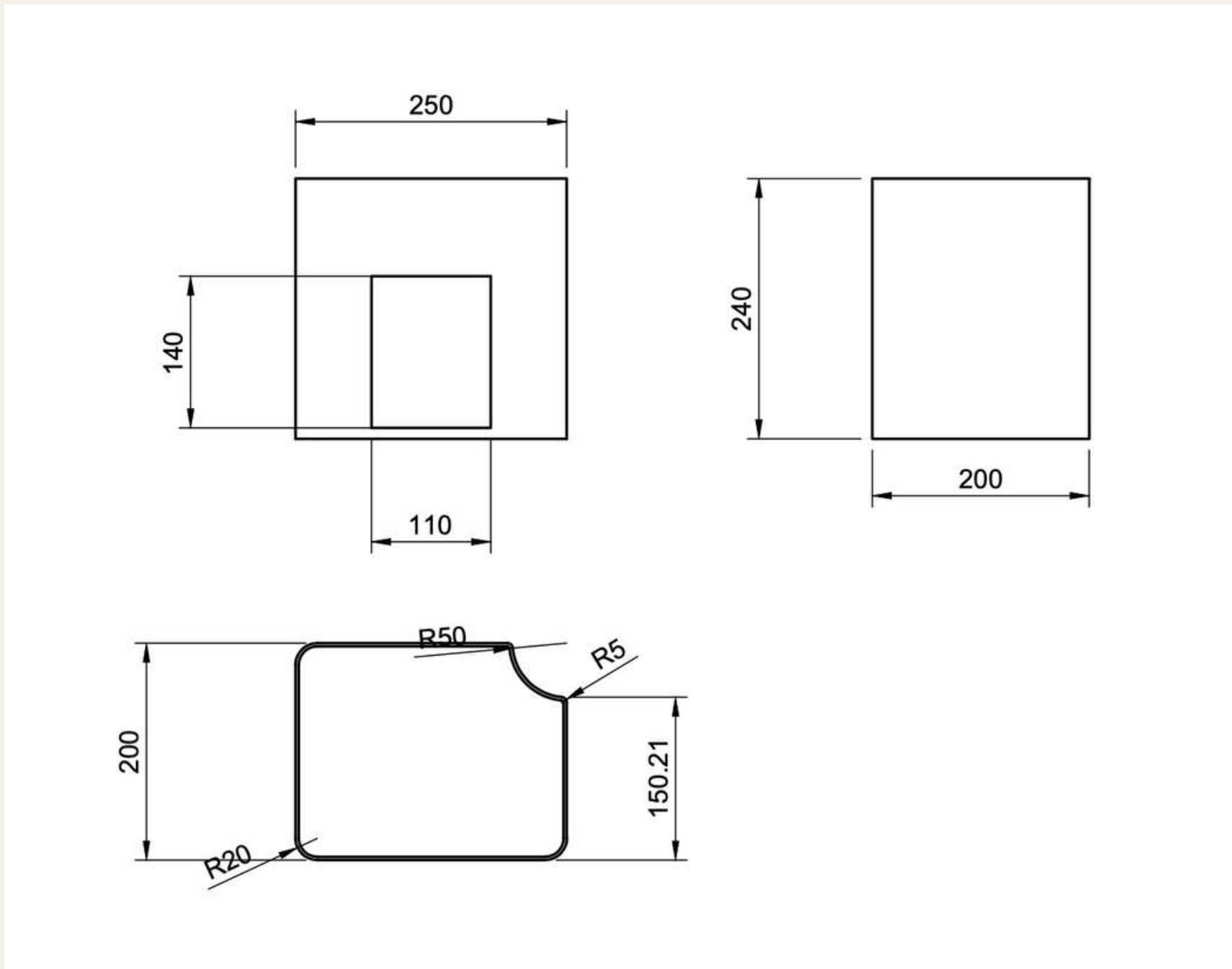


FreeFree









GENERAL DIMENSIONS

HOW IT WORKS

E-Ink Displays

In an E Ink display, no backlight is used; rather, ambient light from the environment is reflected from the surface of the display back to your eyes.

Water pump & Heating coil

Powerful water pump that allows pressure to build up, helping the coffee extract successfully. heating coil to warm the water up of 1500 watts for time efficiency

Coffee Grinder

Coffee grinder with a compressed air chamber to clean any residue, reducing build up of grounds.

Thermal regulator

Thermal regulator to warm the water to its optimal temperature for the best flavor and coffee extraction.

3rd Wave Coffee

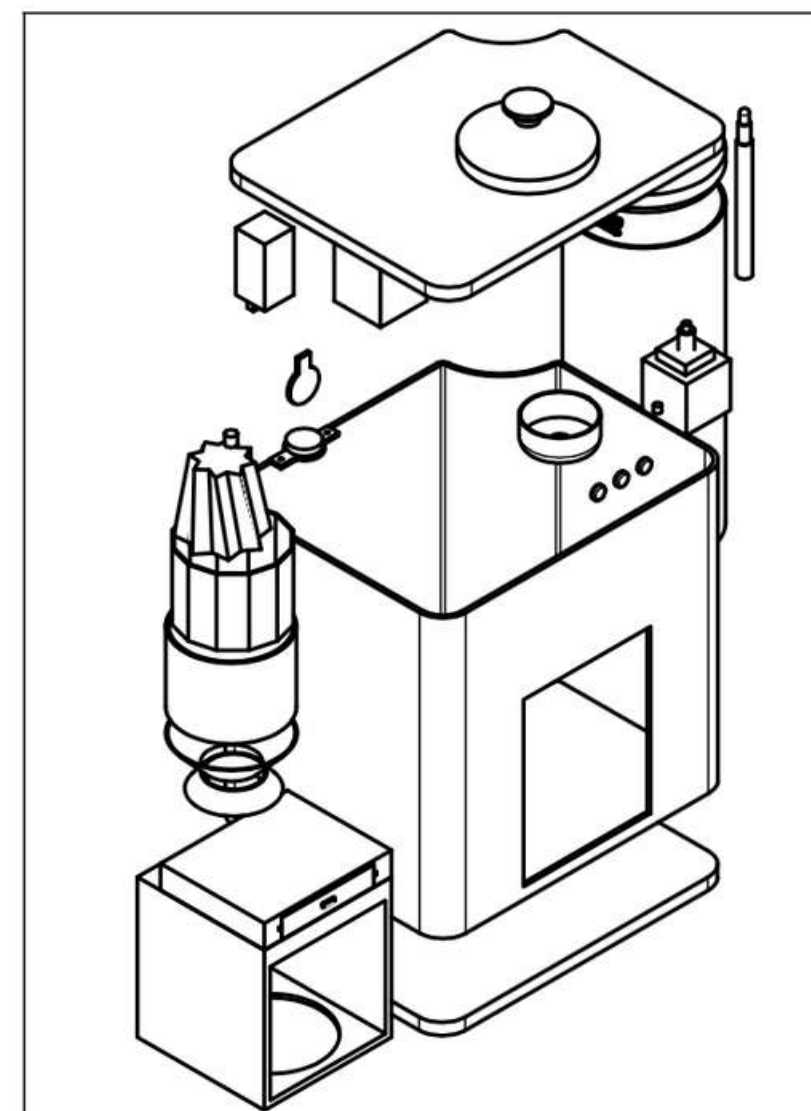
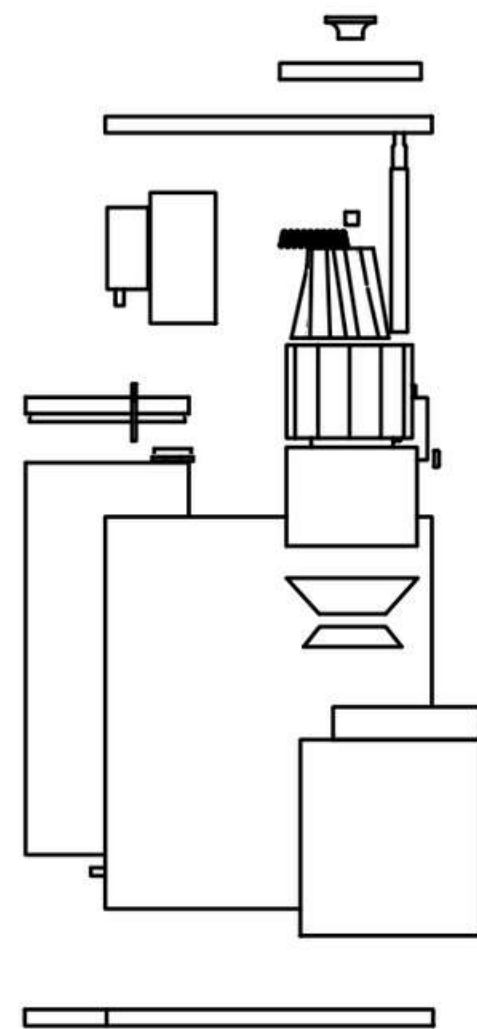
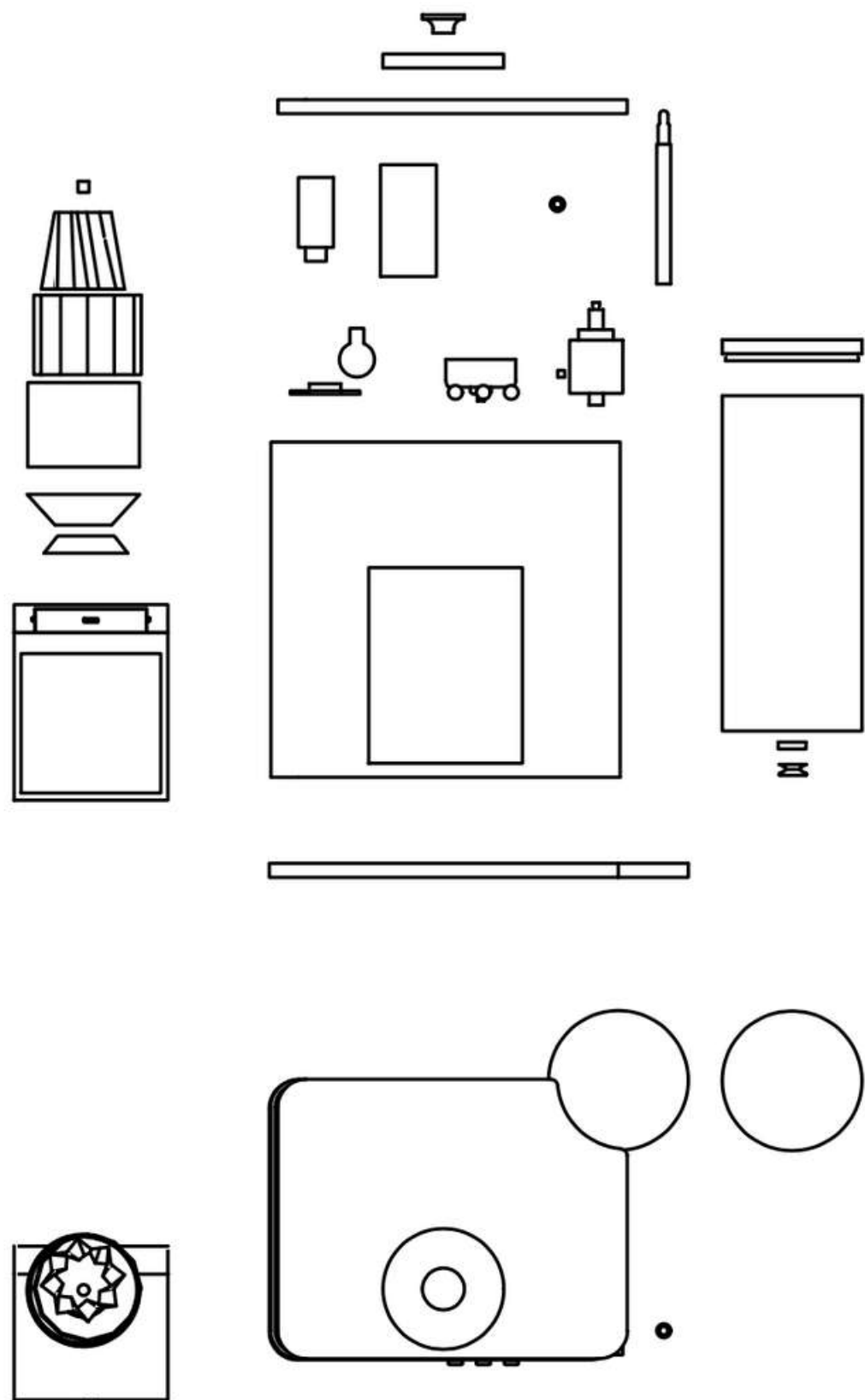
Implementing knowledge of 3rd wave coffee for ratios of coffee to water for optimal coffee flavour.

HOW IT WORKS

Coffee Grinder Motor
Raspberry Arduino
Power Interruptor
Thermo-Regulator
Conical Coffee Grinder



Stylus Pen
Heating Coil
Water pump
Coffee Dripper
Water Deposit



FeeFee

Exploded View

Ratio, 1:10

Lucia Gutierrez

Matteo Agati

16/01/2022

HOW IT'S USED



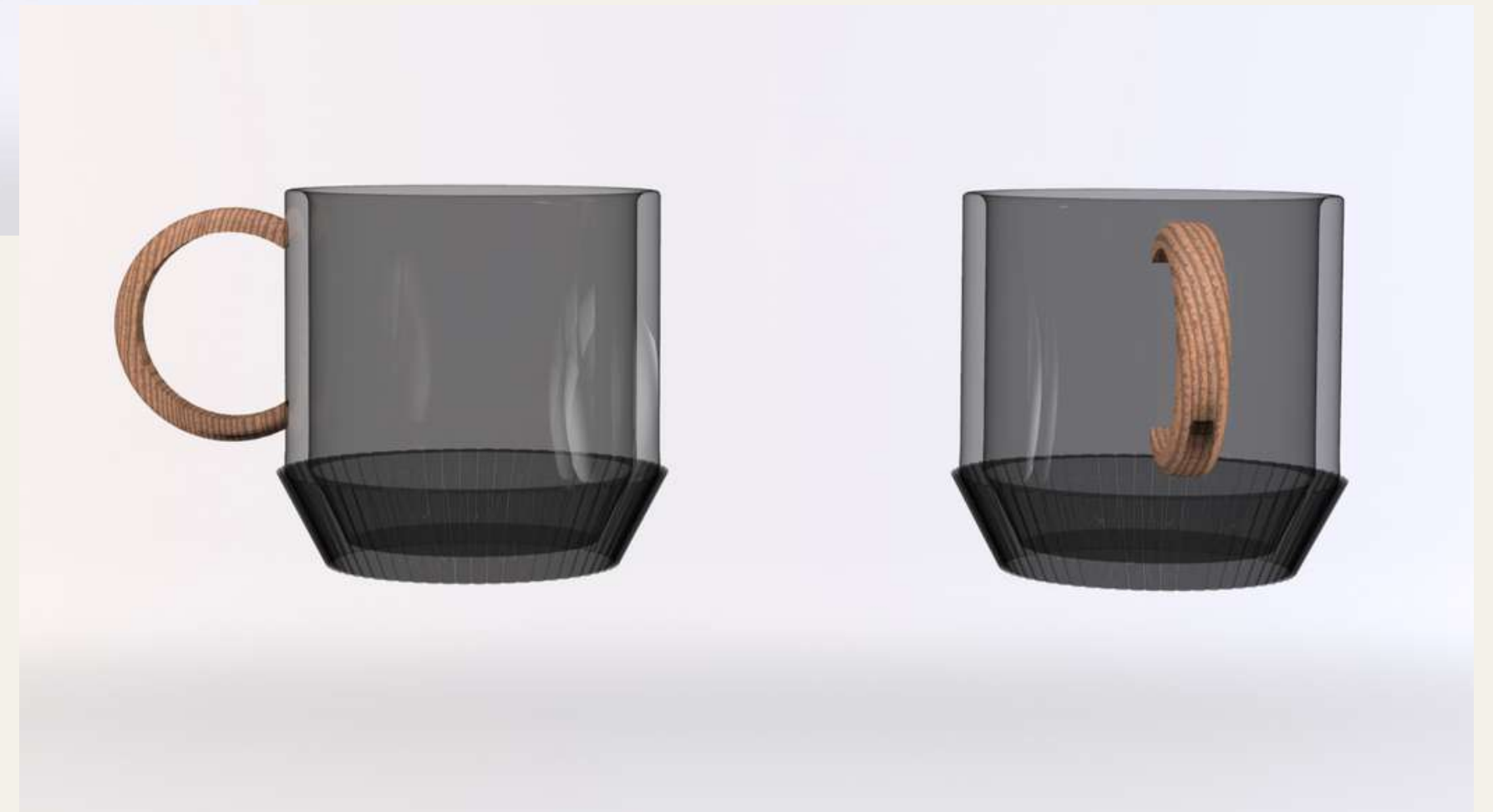




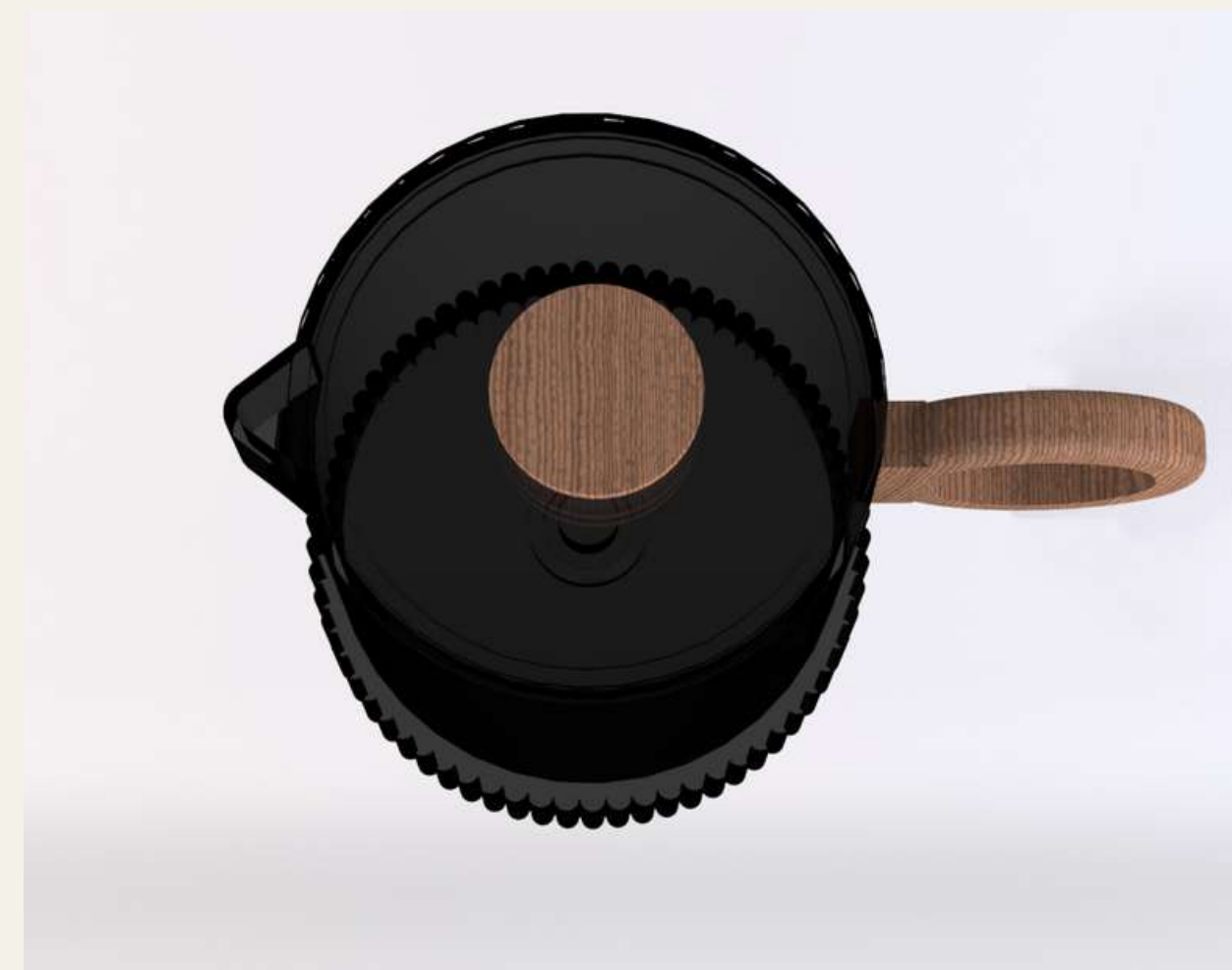
MUGS



MUGS

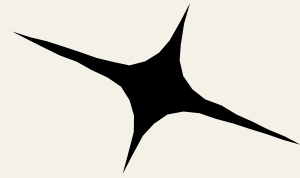


MILK FROTHER





MATERIALS & TECHNOLOGY



IoT

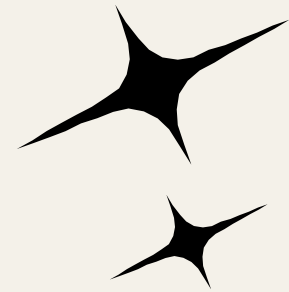
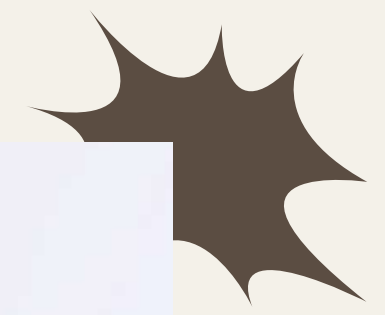
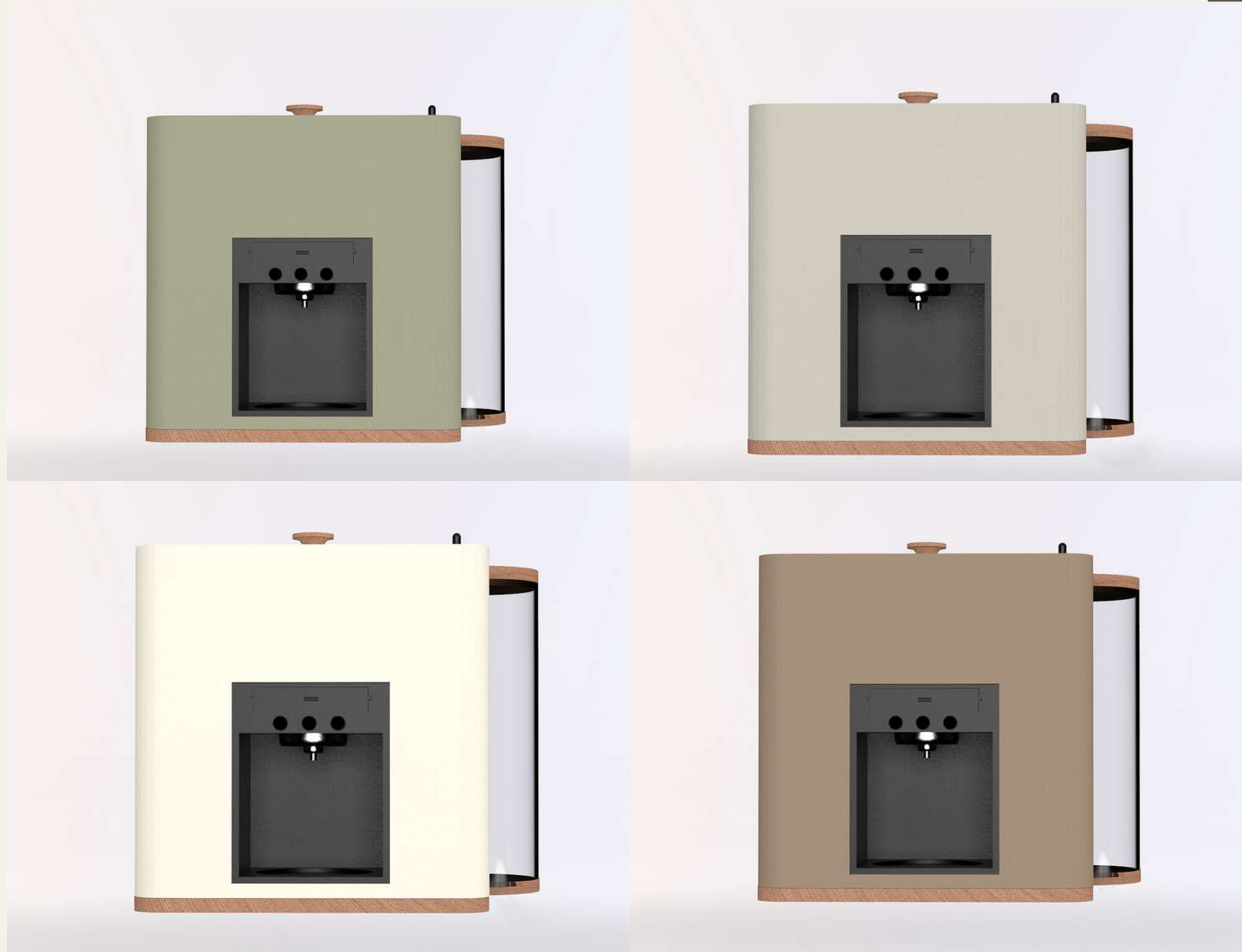
By implementing IoT into my coffee machine, the user gets the ip address or Internet Protocol address, which is the "name" of the product that allows us to connect it with one another product through the internet, making my vision possible.

Connection

The user is able to draw and write on the surface of the coffee machine. After the user will get the ip address of their family member that has the same machine, and will able to send the written messages/drawing to them and communicate in a subtle and soft way.



COLOR VARIATIONS



THANK YOU!

